



MONTHLY MEMBERSHIP PROGRESS REPORT

Results as of: 7/31/2016

Multiple District 31

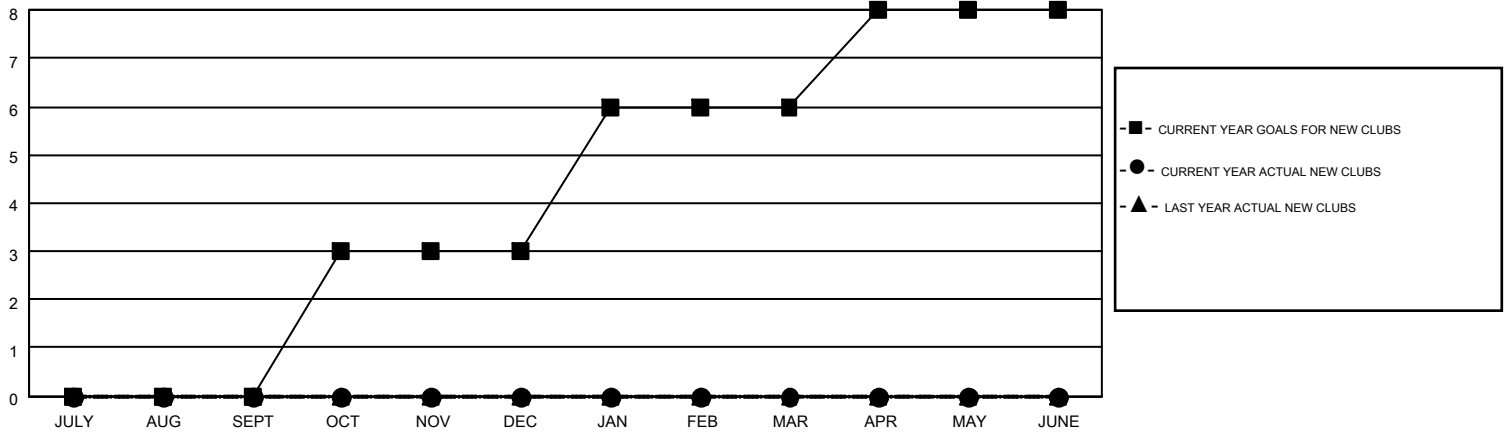
LOCATION: NORTH CAROLINA

GMT: HARVEY WHITLEY

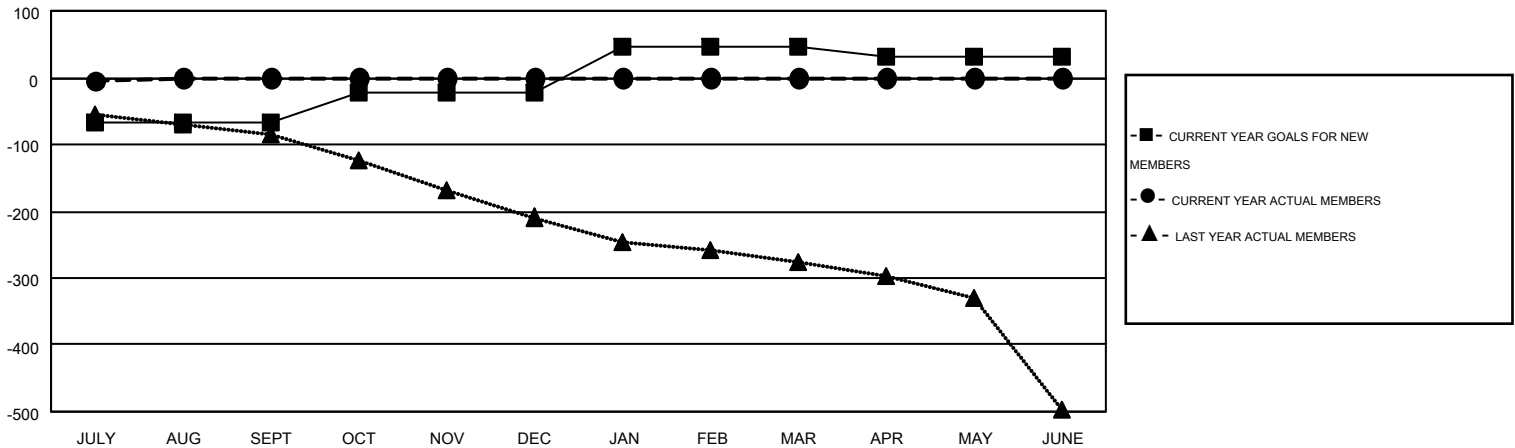
GMT CA 1

Clubs					Members				
RESULTS FOR 2016-2017					RESULTS FOR 2016-2017				
QUARTER	NEW CLUB GOAL	NEW CLUBS	DROPPED CLUBS	NET GAIN/LOSS	QUARTER	NEW MEMBER GOAL	CHARTER AND NEW MEMBERS ADDED	DROPPED MEMBERS	NET GAIN/LOSS
JULY/AUG/SEPT	0	0	0	0	JULY/AUG/SEPT	-66	94	98	-4
OCT/NOV/DEC	3	0	0	0	OCT/NOV/DEC	43	0	0	0
JAN/FEB/MAR	3	0	0	0	JAN/FEB/MAR	68	0	0	0
APR/MAY/JUNE	2	0	0	0	APR/MAY/JUNE	-13	0	0	0

GOALS AND ACTUAL NEW CLUBS CUMULATIVE



GOALS AND ACTUAL MEMBERS CUMULATIVE



DROPPED CLUBS: 0	37 CLUBS OF 302 ADDED 1 OR MORE NEW MEMBERS	<u>GENDER DISTRIBUTION</u>	
<u>DROPPED MEMBERS</u>		MALE	4,498 (71.17%)
DECEASED	12	FEMALE	1,822 (28.83%)
CLUB CANCELLED	0	<u>FAMILY UNIT MEMBERS</u> 1,329	
OTHER	86	<u>HEAD OF HOUSEHOLD</u> 651	
TOTAL	98	<u>NON-HEAD OF HOUSEHOLD</u> 678	

[CLICK HERE FOR HEALTH ASSESSMENT DATA](#)